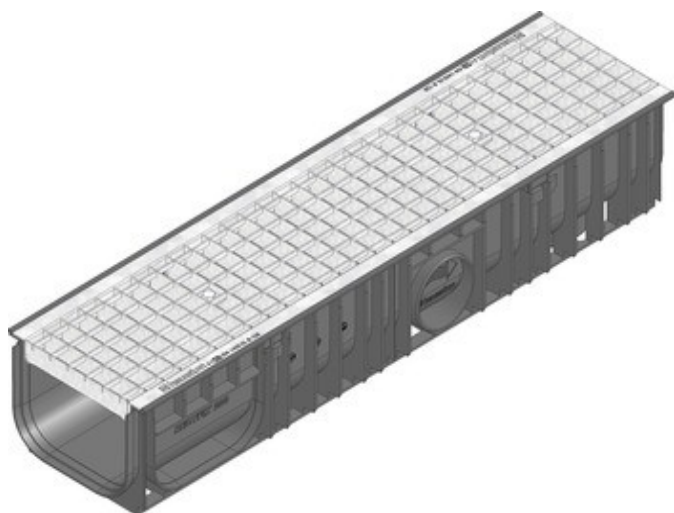
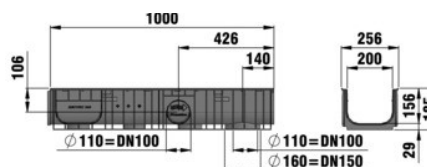


# RECYFIX®STANDARD 200

RECYFIX®STANDARD 200, class B 125, Type 010 with mesh grating MW 30/30, galvanised, locked



B 125



## ■ Technical data:

Length mm	Width mm	Height mm	Weight kg	Inlet cross-section cm <sup>2</sup> /m	Drainage cross-section cm <sup>2</sup>	Inlaying depth	Item-no.
1000	256	185	9,3	1620	290	33	40672

## ■ Product description:

RECYFIX STANDARD 200 Type 010 - Channel made of PE-PP-recycled plastic, according to DIN19580 / EN 1433, loading capacity from A 15 up to B 125, with vertical connection possibility, with mesh grating, mesh width 30/30, galvanised, with locking device, L/W/H 1000x256x185 mm, Item No. 40672

## ■ Material:

- **Channel body:** RECYFIX Material (recycled PP)
- **Bolts:** Stainless steel 1.4301
- **Locking handle:** Electrogalvanised steel
- **Grating:** hot-dip galvanised steel

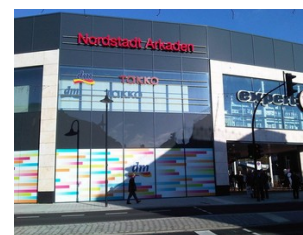
## ■ Type acc. DIN EN 1433:

M

## ■ Set of rules:

## ■ Application areas:

- Railway platform
- Facade drainage
- Flat roofs, terraces and balconies
- Pedestrian zones
- Gardening and landscaping
- Multi storey car parks
- Market squares, markets
- Public areas and squares
- Cityscapes with architectural value



- Cycle paths and footpaths
- School yards
- Underground car parks, multi-storey car parks
- Access drives private